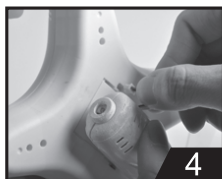
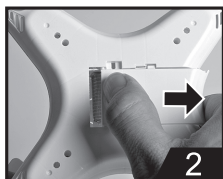
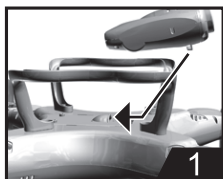


Thanks to the 6 axis gyroscope, you can throw the quadcopter and push the throttle right up, it will automatically level out and hover smoothly in the sky. This can also be done when the quadcopter is rolling.



INSTALL CAMERA



1. Push the camera into a hold on the battery cover (Figure 1).
2. Open the battery cover with camera (Figure 2).
3. Lock screws to add-on the camera tight (Figure 3).
4. Close the battery cover with camera than insert the 3-pin plug to the hold in side (Figure 4).

PHOTOGRAPHY / VIDEO INSTRUCTIONS:

1. Methods:
 - ① Make sure the 3-pin plug of camera is inserted to the quadcopter.
 - ② Turn the quadcopter power on, the camera works normally when the RED indicator change form flashing to green and keep light on. If the RED indicator just light on and light off seconds later, it means the SD card is not in the camera. Please insert the SD card, than the indicator light on GREEN.
2. Get to know take photo and video:
 - ① Turn on the transmitter and pull left lever up and down to connect signal between quadcopter and transmitter.
 - ② Take Photo: Make sure camera normally work, press the button on top right corner one time, camera will take a photo after a beep from transmitter when the GREEN indicator on camera flash one time in RED.
 - ③ Take Video: Make sure camera normally work, press the button on top right corner for seconds, camera start take video when a beep from transmitter and the GREEN indicator on camera change to RED and keep flashing. Press the button slightly again, another beep means video stopped and the RED flashing indicator on camera will keep light on GREEN.



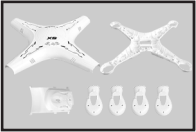
Notes: 3D rollover function of the aircraft is automatically cancelled when camera is installed. Restart aircraft power if there is still 3D rollover function while camera does not work after the camera is installed.

TROUBLE SHOOTING

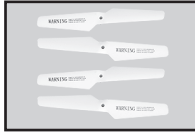
| Problem | Reason | Solution |
|----------------------------------------------------------------|---------------------------------------------------------------------------------------------------------------------------------------------------------------------------|--------------------------------------------------------------------------------------------------------------------------------------------------|
| No response from the quadcopter | 1.Quadcopter battery power not enough. 2.Transmitter battery power not enough. 3.The band of the transmitter does not correspond to the decoding of the quadcopter. | 1.Charge the quadcopter 2.Charge or replace them if required. 3.Adjust the band on the transmitter and keep it the same as the quadcopter. |
| If the quadcopter is slow to respond or difficult to manoeuver | 1.Insufficient power with the transmitter. 2.Transmitter of the same frequency is used nearby. | 1.Replace the battery. 2.Use the helicopter out of the range of other RC quadcopter. |

SPARE PARTS

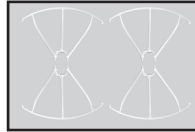
All the spare parts below can be bought from local distributor.



X5C-01
Body cover



X5C-02
Main blades



X5C-03
Protecting frames



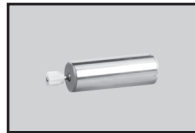
X5C-04
Landing skids



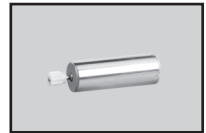
X5C-05
Motor holder



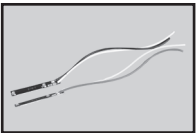
X5C-06
Lampshades



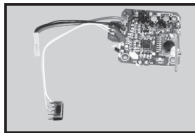
X5C-07
Motor A



X5C-08
Motor B



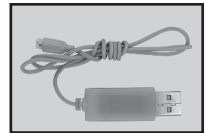
X5C-09
Light boards



X5C-10
Receiver board



X5C-11
Battery



X5C-12
USB charging cable

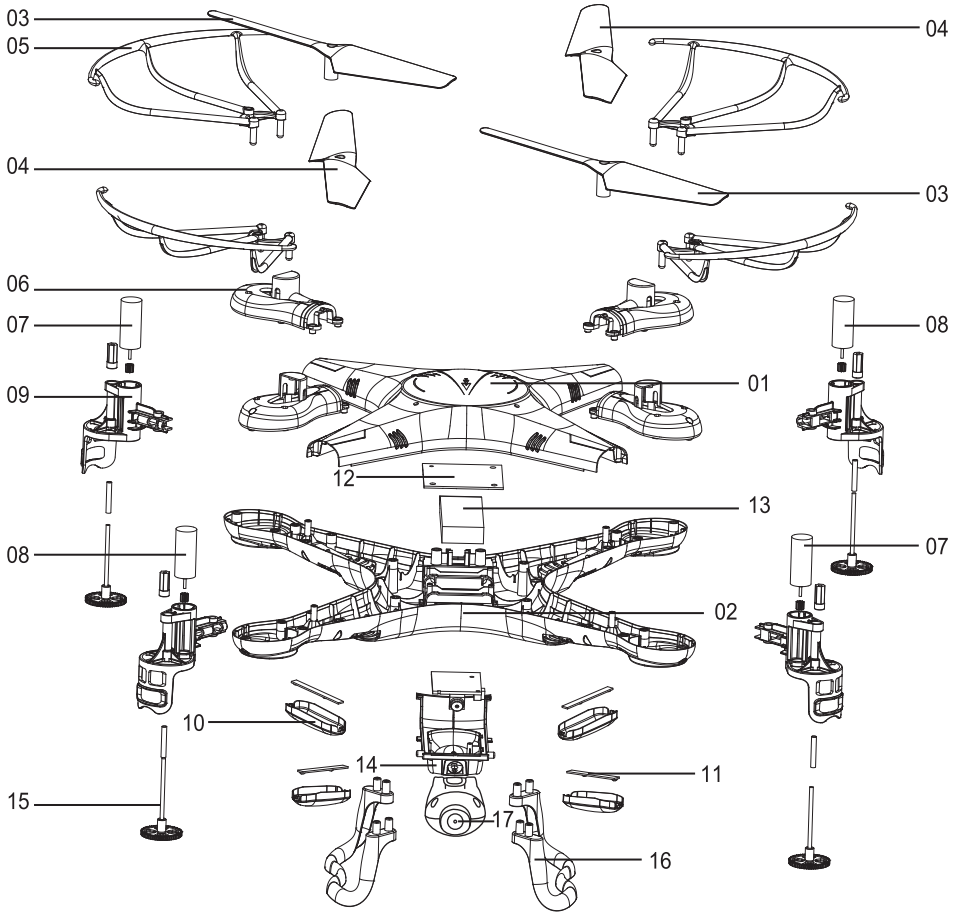


X5C-13
Camera



X5C-14
Transmitter

BREAKDOWN & DIAGRAM



| Code | Description | Quantity | Code | Description | Quantity | Code | Description | Quantity |
|------|-------------------|----------|------|----------------|----------|------|---------------|----------|
| 01 | Upper body | 1 | 08 | Receiver motor | 2 | 15 | Gear | 4 |
| 02 | Lower body | 1 | 09 | Motor holder | 4 | 16 | Landing skids | 2 |
| 03 | Rotating blade | 2 | 10 | Lampshades | 4 | 17 | Camera | 1 |
| 04 | Reversing blade | 2 | 11 | Light boards | 4 | | | |
| 05 | Protecting frames | 4 | 12 | Receiver board | 1 | | | |
| 06 | Battery cover | 4 | 13 | Battery | 1 | | | |
| 07 | Rotating motor | 2 | 14 | Battery cover | 1 | | | |